



TM

W-K Air-Up Series Pneumatic Rolling Jacks

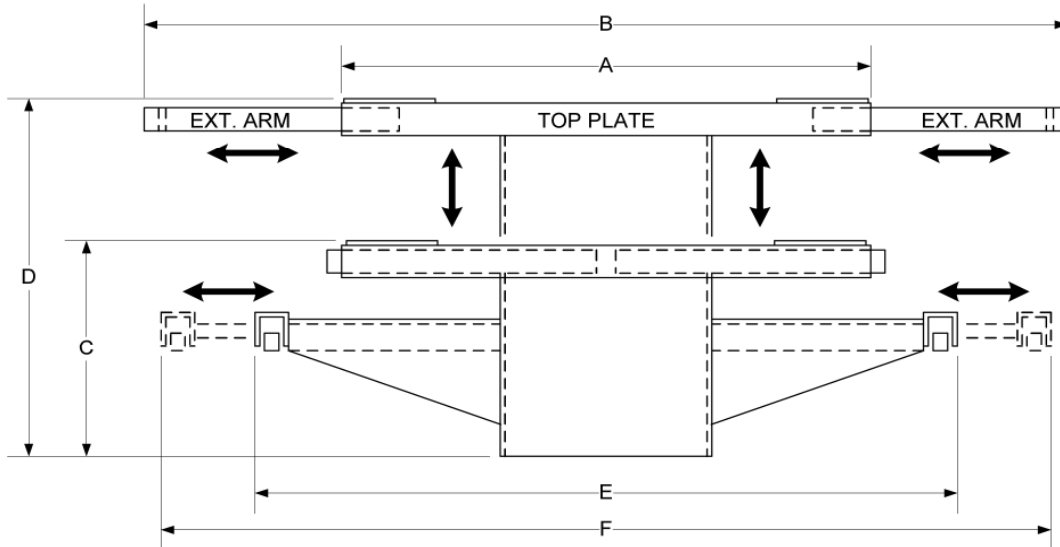
- 6,000 lbs to 50,000 lbs lift capacity
- 5 year manufacturer Warranty
- Can be customized to fit most Hoist makes and/or models OR designed to fit any Pit

Air-Up Series Jacks

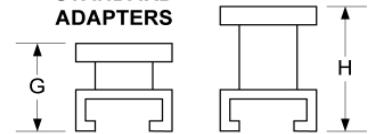
1.800.353.0550 • www.w-kindustries.com

W-K AIR-UP SERIES ROLLING JACK SPECIFICATIONS & DIMENSIONS

AIR-UP SERIES PNEUMATIC JACK



STANDARD ADAPTERS



MODEL	WK - 6		WK - 7		WK-9		WK - 12		WK - 15		WK - 18	
CAPACITY	6000 lbs/2.7 tons		7000 lbs/3.2 tons		9000 lbs/4.1 tons		12000 lbs/5.4 tons		15,000 lbs/6.8 tons		18,000 lbs/8.2 tons	
DIM.	inch	cm	inch	cm	inch	cm	inch	cm	inch	cm	inch	cm
A	35	88.9	35	88.9	35	88.9	40	101.6	40	101.6	40	101.6
B	59	149.9	59	149.9	59	149.9	64	162.6	64	162.6	64	162.6
C	10.75	27.3	10.75	27.3	10.75	27.3	12.75	32.4	12.75	32.4	12.75	32.4
D	18	45.7	18	45.7	18	45.7	20.5	52.1	20.5	52.1	20.5	52.1
E	33	83.8	33	83.8	33	83.8	45	114.3	45	114.3	45	114.3
F	45	114.3	45	114.3	45	114.3	57	144.8	55	139.7	55	139.7
G	3.5	8.9	3.5	8.9	3.5	8.9	6	15.2	6	15.2	6	15.2
H	5.5	14.0	5.5	14.0	5.5	14.0	8	20.3	8	20.3	8	20.3
BOX WEIGHT	310 lbs	140.6 kg	320 lbs	145.1 kg	340 lbs	154.2 kg	500 lbs	226.8 kg	830 lbs	376.5 kg	830 lbs	376.5 kg

MODEL	WK - 20		WK - 25		WK - 35		WK - 40		WK - 50	
CAPACITY	20,000 lbs/9.1 tons		25,000 lbs/11.3 tons		35,000 lbs/15.9 tons		40,000 lbs/18.1 tons		50,000 lbs/22.7 tons	
DIM.	inch	cm	inch	cm	inch	cm	inch	cm	inch	cm
A	40	101.6	40	101.6	40	101.6	42	106.7	42	106.7
B	48	121.9	48	121.9	48	121.9	48	121.9	48	121.9
C	12.75	32.4	12.75	32.4	12.75	32.4	15.5	39.4	15.5	39.4
D	20.5	52.1	20.5	52.1	20.5	52.1	25	63.5	25	63.5
E	45	114.3	45	114.3	45	114.3	50	127.0	50	127.0
F	55	139.7	55	139.7	55	139.7	60	152.4	60	152.4
G	6	15.2	6	15.2	6	15.2	4	10.2	4	10.2
H	8	20.3	8	20.3	8	20.3	6	15.2	6	15.2
BOX WEIGHT	1100 lbs	498.9 kg	1100 lbs	498.9 kg	1400 lbs	635.1 kg	1900 lbs	861.8 kg	1900 lbs	861.8 kg



W-K Air-Up Series Pneumatic Rolling Jacks

- 6,000 lbs to 50,000 lbs lift capacity
- 5 year manufacturer Warranty
- Can be customized to fit most Hoist makes and/or models OR designed to fit any Pit

Air-Up Series Jacks

1.800.353.0550 • www.w-kindustries.com

W-K AIR-UP SERIES PACKAGING SPECIFICATIONS & DIMENSIONS

Each Standard Rolling Jack Contains*:

FOR MODELS: WK-6, WK-7, WK-9, WK-12

#	Item	Std Quantity
1	Rolling Jack	1
2	Wheel Assembly	2
3	Short Adapter	2
4	Tall Adapter	2
5	Pin Adapter	2

FOR MODELS: WK-15, WK-18, WK-20, WK-25, WK-35, WK-40, WK-50

#	Item	Std Quantity
1	Rolling Jack	1
2	Wheel Assembly	2
3	Short Adapter	2
4	Tall Adapter	2

FOR ALL MODELS:
Certain standard dimensions can be customized on request to fit most hoists or pits



Model	Lifting Capacity	Unit Boxed Dimensions (without pallet)			Unit Boxed Weight* (without pallet)	Units Per Pallet (std 4 ft x 4 ft)			Pallet Dimensions **			Pallet Weight
		inches				total	tier	tie	inches			
		height	width	length					height	width	length	
W-K-6	6,000	13	17	46	310	6	3	2	43	48	48	1,890
W-K-7	7,000	13	17	46	320	6	3	2	43	48	48	1,950
W-K-9	9,000	13	17	46	340	6	3	2	43	48	48	2,070
W-K-12	12,000	14	28	50	500	3	3	1	49	48	50	1,530
W-K-15	15,000	15	38	50	830	1	1	1	19	48	48	860
W-K-18	18,000	15	38	50	830	1	1	1	19	48	48	860
W-K-20	20,000	15	38	50	1,100	1	1	1	19	48	48	1,130
W-K-25	25,000	15	38	50	1,100	1	1	1	19	48	48	1,150
W-K-35	35,000	15	38	50	1,400	1	1	1	19	48	48	1,430
W-K-40	40,000	17	38	50	1,900	1	1	1	21	48	48	1,930
W-K-50	50,000	17	38	50	1,900	1	1	1	21	48	48	1,930

* includes standard attachments only

** heat treated pallets can be made available upon request

Model	Lifting Capacity		Unit Boxed Dimensions (without pallet)			Unit Boxed Weight* (without pallet)	Units Per Pallet (std 122 cm x 122 cm)			Pallet Dimensions **			Pallet Weight	
	kg	metric tons	cm				kg	total	tier	tie	cm			
			height	width	length						height	width		length
W-K-6	2,727	2.7	33.0	43.2	116.8	140.9	6	3	2	109.22	121.9	121.92	859.1	
W-K-7	3,182	3.2	33.0	43.2	116.8	145.5	6	3	2	109.22	121.9	121.92	886.4	
W-K-9	4,091	4.1	33.0	43.2	116.8	154.5	6	3	2	109.22	121.9	121.92	940.9	
W-K-12	5,455	5.5	35.6	71.1	127.0	227.3	3	3	1	124.46	121.9	127	695.5	
W-K-15	6,818	6.8	38.1	96.5	127.0	377.3	1	1	1	48.26	121.9	121.92	390.9	
W-K-18	8,182	8.2	38.1	96.5	127.0	377.3	1	1	1	48.26	121.9	121.92	390.9	
W-K-20	9,091	9.1	38.1	96.5	127.0	500.0	1	1	1	48.26	121.9	121.92	513.6	
W-K-25	11,364	11.4	38.1	96.5	127.0	500.0	1	1	1	48.26	121.9	121.92	522.7	
W-K-35	15,909	15.9	38.1	96.5	127.0	636.4	1	1	1	48.26	121.9	121.92	650.0	
W-K-40	18,182	18.2	43.2	96.5	127.0	863.6	1	1	1	53.34	121.9	121.92	877.3	
W-K-50	22,727	22.7	43.2	96.5	127.0	863.6	1	1	1	53.34	121.9	121.92	877.3	

* includes standard attachments only

** heat treated pallets can be made available upon request