

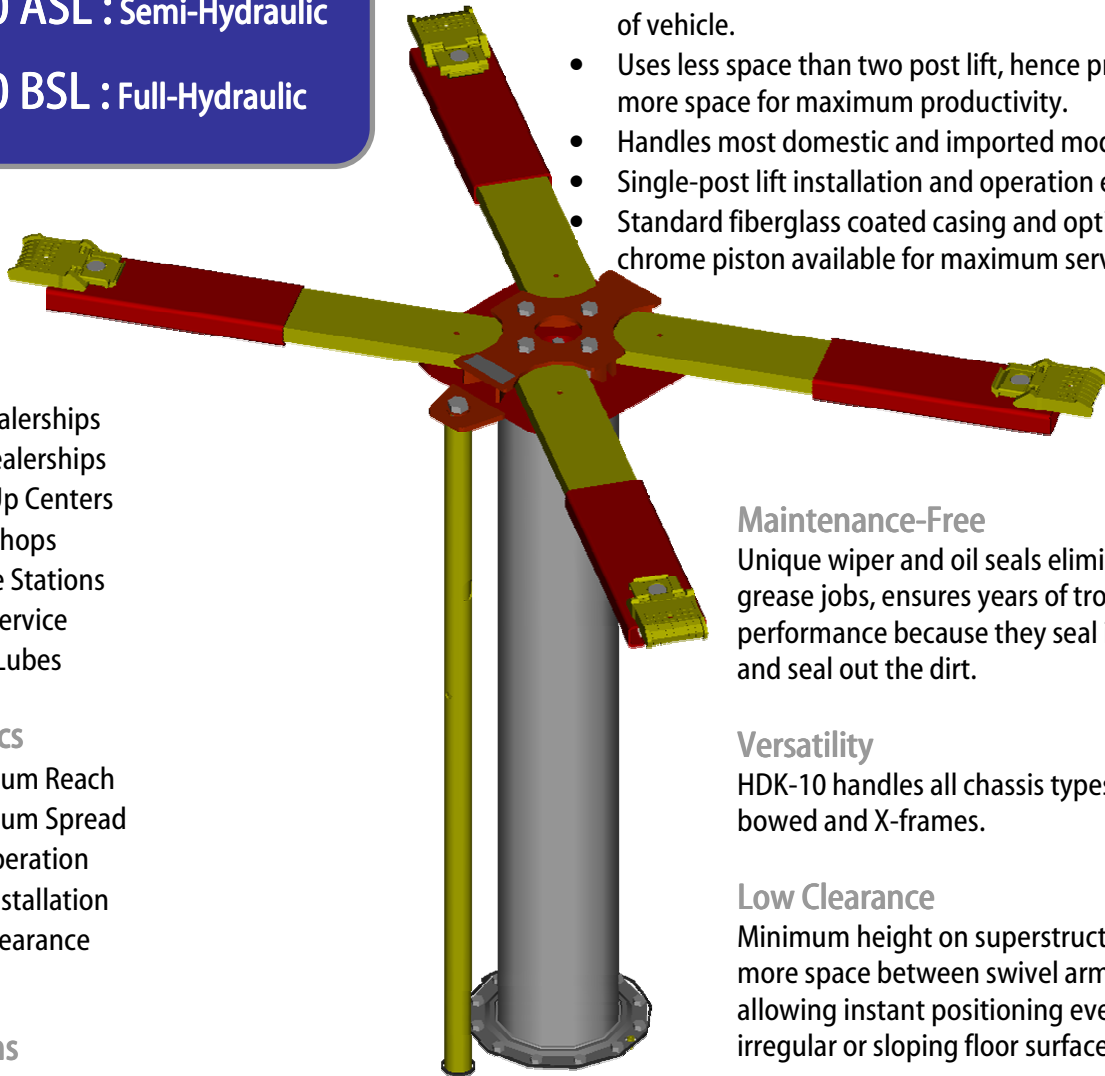


MODEL: HDK-10 (LOW PRESSURE)

HDK-10 ASL : Semi-Hydraulic
HDK-10 BSL : Full-Hydraulic

Benefits

- Provides total clearance around wheel wells and sides of vehicle.
- Uses less space than two post lift, hence providing more space for maximum productivity.
- Handles most domestic and imported models.
- Single-post lift installation and operation economy.
- Standard fiberglass coated casing and optional chrome piston available for maximum service life.



Applications

- Car Dealerships
- Tire Dealerships
- Tune Up Centers
- Body Shops
- Service Stations
- Fleet Service
- Quick Lubes

Characteristics

- Maximum Reach
- Maximum Spread
- Fast operation
- Easy Installation
- Low Clearance

Specifications

Type: Single Post Auto Lift, Frame Contact, Swivel Arms
 Capacity: Available in 8,000 lbs, 10,000 lbs or 12,000 lbs
 Pressure: 130 PSI – 180 PSI (depending on capacity)
 Stroke: 68" (75" Rise)
 Cylinder: 10-5/8"
 Oil Required: 40 Gallons "AS" and 50 Gallons "BS"
 Adapters: Ductile iron, 4 adjustable positions on sliding sleeves
 Safety: Automatic Safety K-Leg/Non-rotator and Low Oil Control are standard features.

Maintenance-Free

Unique wiper and oil seals eliminate weekly grease jobs, ensures years of trouble free performance because they seal in the oil and seal out the dirt.

Versatility

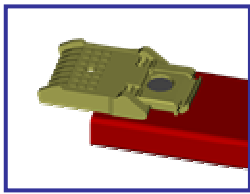
HDK-10 handles all chassis types, unitized, bowed and X-frames.

Low Clearance

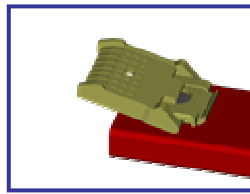
Minimum height on superstructure permits more space between swivel arms and car, allowing instant positioning even with irregular or sloping floor surfaces.

HDK-10 models are exempt from Federal EPA regulations relating to underground storage tanks. Regulation 40 CFR 280

Standard Multi-Position Adaptors



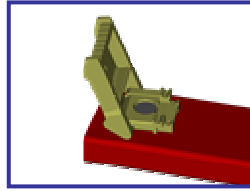
A: 1-1/4" Height



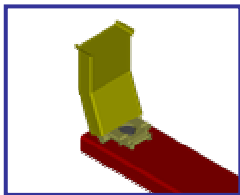
B: 2-1/2" Height



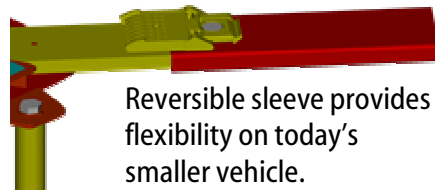
C: 3-3/4" Height



D: 6-1/4" Height

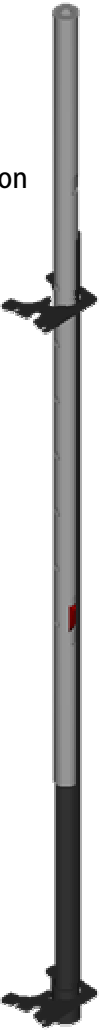


Optional height adaptors are available in 10", 12", and 14".



Reversible sleeve provides flexibility on today's smaller vehicle.

Standard single post Semi-Automatic Multi-Position Safety leg.

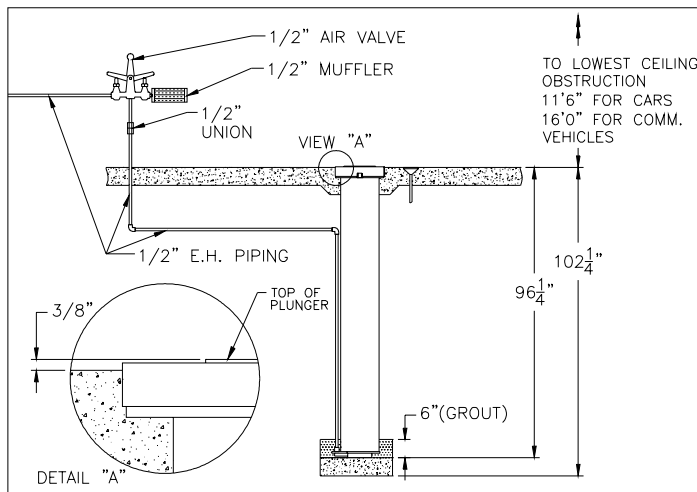
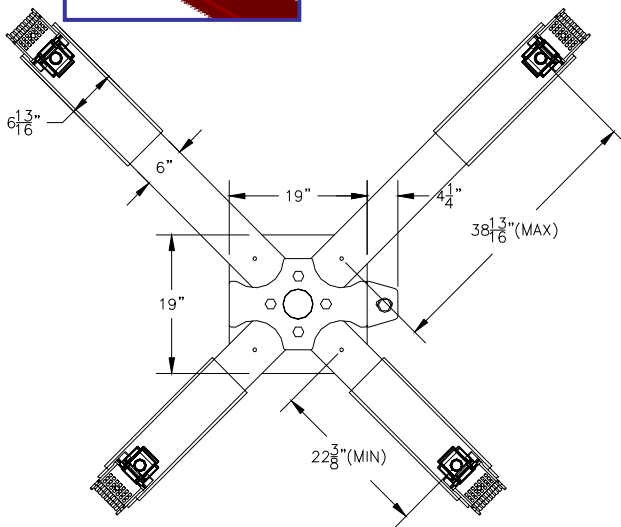


Suggested Written Specifications

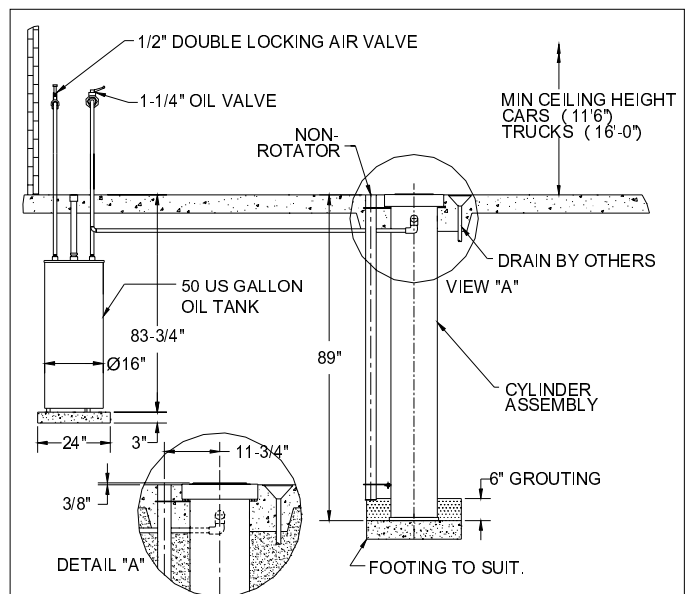
Single-post semi hydraulic or full hydraulic hoists shall have 10-5/8" piston with 68" stroke. The hoist shall be fitted with a swivel arm superstructure complete with detachable and reversible sleeves which shall be mounted 4-positions 360 degree swiveling pads and have a suitably rated capacity.

The hoists shall have lifting capacity ranging from 8000 lbs to 12000 lbs at 130 PSI – 180 PSI (and shall be fitted with options as requested.) The oil seals and wiper packing shall be arranged to ensure positive contact with piston at all points of travel.

Controls for HDK-10 ASL (Semi-hydraulic) model shall consist of one (1) 1/2" non-locking air valve and one (1) 1/2" air muffler. For HDK-10 BSL (Full-hydraulic), it shall consist of one (1) 50 gallon capacity oil tank, one (1) 1-1/4" oil valve, one (1) 1/2" double locking air valve and one (1) 1/2" air muffler.



MODEL: HDK-10ASL



MODEL: HDK-10BSL