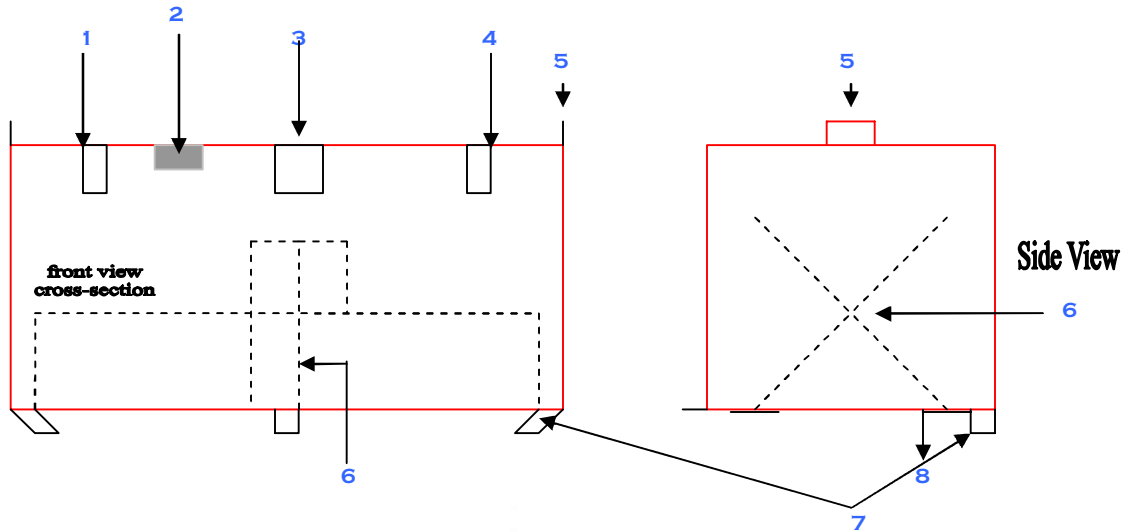


**M O B I L E   R E F U E L L I N G   I B C ' S**  
**CGSB 43.146-2002**  
**RECTANGULAR**



|   |  |
|---|--|
| 1 | 2" pump outlet c/w support plate             |
| 2 | UN/CGSB label                                |
| 3 | 2" Emergency vent                            |
| 4 | 2" fill c/w vented cap                       |
| 5 | Handles                                      |
| 6 | Surge baffle                                 |
| 7 | Bolt down lugs (5) 3x2x3" long 3/16 material |
| 8 | Skid frame                                   |

| CAPACITY       | HEIGHT | LENGTH | WIDTH | MATERIAL (GAUGE)   |
|----------------|--------|--------|-------|--------------------|
| 225L (50gal)   | 24"    | 24"    | 24"   | 11                 |
| 450L (99Gal)   | 24"    | 47"    | 24"   | 11                 |
| 680L (150gal)  | 24"    | 60"    | 30"   | 3/16 <sup>th</sup> |
| 900L (200 gal) | 31"    | 60"    | 31"   | 3/16 <sup>th</sup> |
| 1100L (250Gal) | 34"    | 60"    | 34"   | 3/16 <sup>th</sup> |

**General Information:**

This tank meets or exceeds CGSB regulations. Tank includes emergency venting and a pressure vented fill cap. All tanks come with interior tank baffles and with bolt down lugs for secure installation. This tank is treated with an initial rust deterrent followed with 2 coats of red epoxy paint.

**Options:**

Sandblasting and other paint finish's available  
 Tank heaters and other accessories are available on request.

HASSCO Industries Inc. London, Ontario Canada  
 ISO 9001 Registered

All dimensions and weights are approximate.

All Text, Images and Drawings ©2006 HASSCO Industries Inc. and are subject to change without notice.