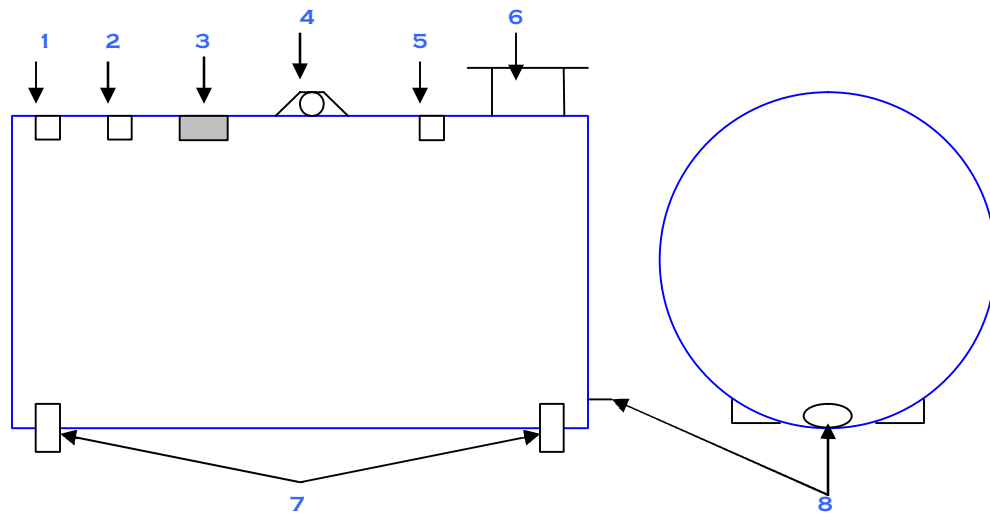


# S I N G L E   W A L L   U T I L I T Y   T A N K S

## U L C   S 6 4 3



1	2" flange
2	3" emergency vent
3	ULC Label
4	Lift lug
5	2" Flange
6	Overfill containment chamber
7	Legs
8	1" bottom outlet

MATERIAL (GAUGE)	TANK CAPACITY	DIAMETER	LENGTH	WEIGHT
14	450L (100gal)	30"	48"	110 lbs
14	1100L (250gal)	38"	60"	260 lbs
14	1360L (300gal)	38"	72"	310 lbs
12	2200L (500gal)	50"	72"	510 lbs
12	4500L (1000gal)	50"	144"	1010 lbs

### General Information

This tank meets or exceeds ULC S643 regulations. Completed tank is pressurized to 5 lbs. psi. to check for possible leaks. Exterior is chemically cleaned prior to applying 1 coat primer and 2 finish coats epoxy paint. All required decals are installed on the tank prior to shipment. Mandatory integrated spill boxes are included on all tanks. Primary tank emergency venting standard, also included is a galvanized vented fill cap.

### Options

Sandblasting , remote fills, audible hi-level alarms, additional tank openings and placements, tank gauges, whistles, paint colours, full length rails, access steps plus many more options are available for this style of tank.

HASSCO Industries Inc. London, Ontario Canada  
ISO 9001 Registered

All dimensions and weights are approximate.

All Text, Images and Drawings ©2006 HASSCO Industries Inc. and are subject to change without notice.