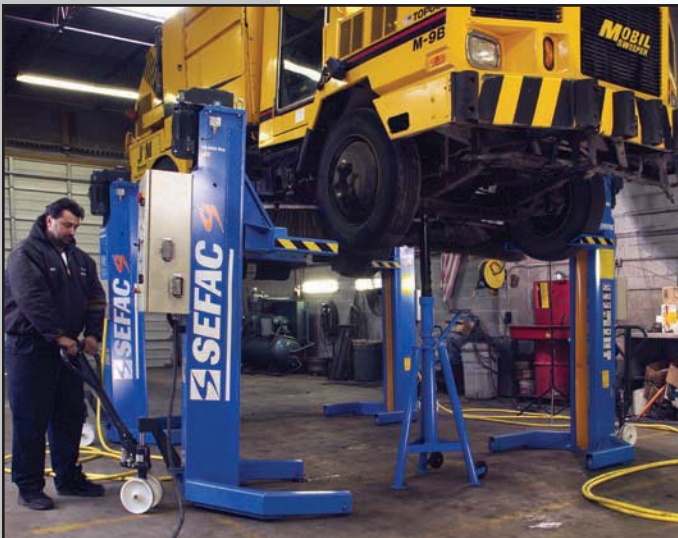


Lifts



Self Locking Fail Sage Lifting Design

Unique threaded screw and parachute nut are self locking and guaranteed safe at all times.



Road Lifts:

To use a Sefac lift, all you need is a flat, solid floor, a power supply and before you know it, the vehicle is in the air for important maintenance. Sefac lifts are portable, giving you the flexibility to adapt as the working environment or conditions change. They can be used inside or outside or across multiple work stations. Once the vehicle is in the air, you have unobstructed access to the vehicle underside. We can supply as a set of four or six columns for different type of vehicles, as well as in capacities up to 50,000 lbs per column.

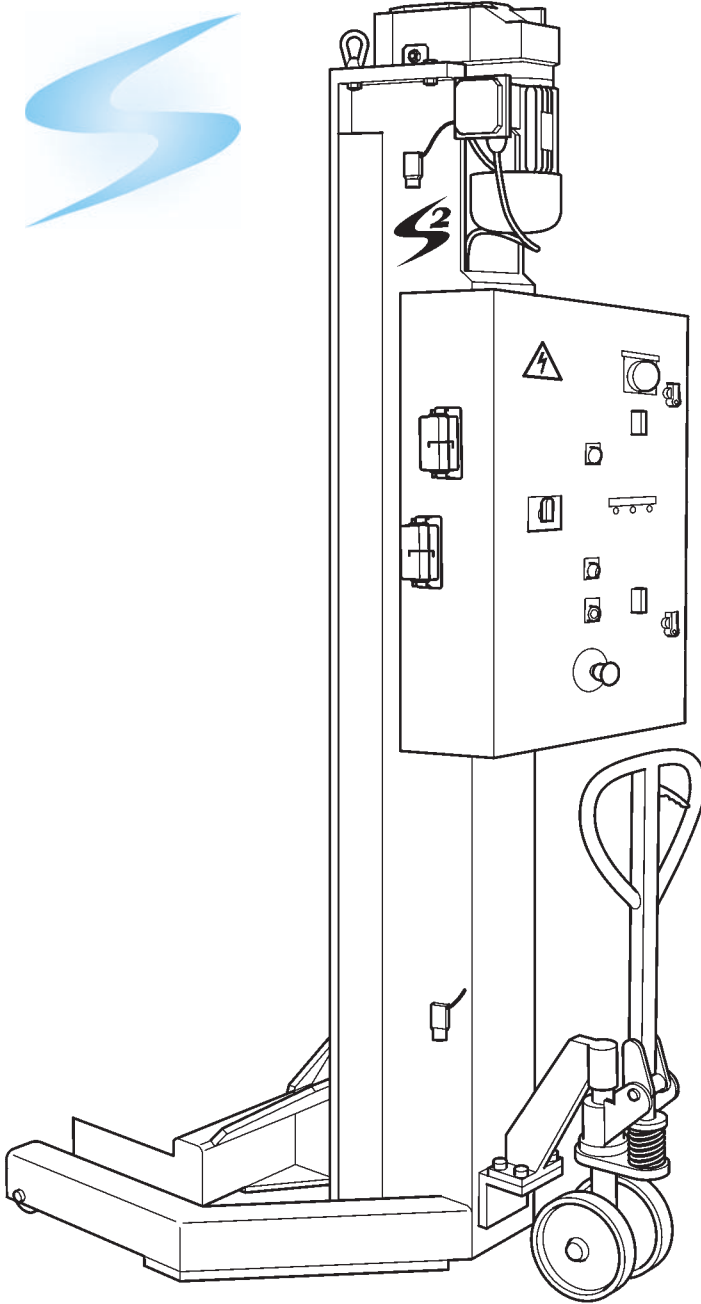
As a mobile column lifts by the wheel, there is unobstructed access to the underside of the vehicle; ideal for all kinds of routine and major maintenance duties. You have the ability to operate lifts in pairs for the replacement of axles, air bags and single columns for wheel free capability.

Each lift is easily one man portable, meaning that the lifts can be utilized across multiple work stations, both inside and out.

Rail lifts:

Keep your rolling stock running by using a Sefac lift for your maintenance jobs. The simple, low costs solution as no civil engineering is required. Available for all rail applications; with capacities from 10,000 lbs to 50,000 per column.

Technical Specifications



Model no. S₂ (PMS412072)	SEFAC
Lifting Capacity per column	16,000 lbs
Lifting Capacity per set of 4	64,000 lbs
Lifting Capacity per set of 6	96,000 lbs
Lifting / Lowering Speed	27 inches/pm
Lifting Height	70 inches
Weight per Lift Unit	948 lbs

Drive

A heavy duty steel lifting screw and a premium alloy bronze load nut - guaranteed self locking. The ultimate in safety as without power the lift cannot lower.

Isolevelling

Whether being used as a set of four or six, all lifts are monitored in both raise and lower for synchronization, automatically correcting any differential in lifting height between the lifting forks.

Fault finding

Up to 17 operational or safety faults are detected and communicated to the operator thru 3 LED's on the master control. The easy to read chart shows what the problem is and with which lift, making trouble shooting simple.

Emergency stop

Each column is fitted with an emergency stop safety button which, when pressed stops operation of the lifts. It needs a simple turn to reset.

Mode of operation

By the flick of a switch on the master control, you can operate all columns, any of the pairs across an axle or any single column.
For added safety, you can only operate from one of the columns selected.

Upgrade from 4 to 6 lifts

While today's requirement may be for 4 columns, as your fleet changes you may need to upgrade to a set of 6 lifts. This can be achieved simply and without any modification.

Portability

We believe that with a column weight of less than 1,000lbs we have found the perfect balance between strength and portability. Each column comes with a simple to use pallet jack.